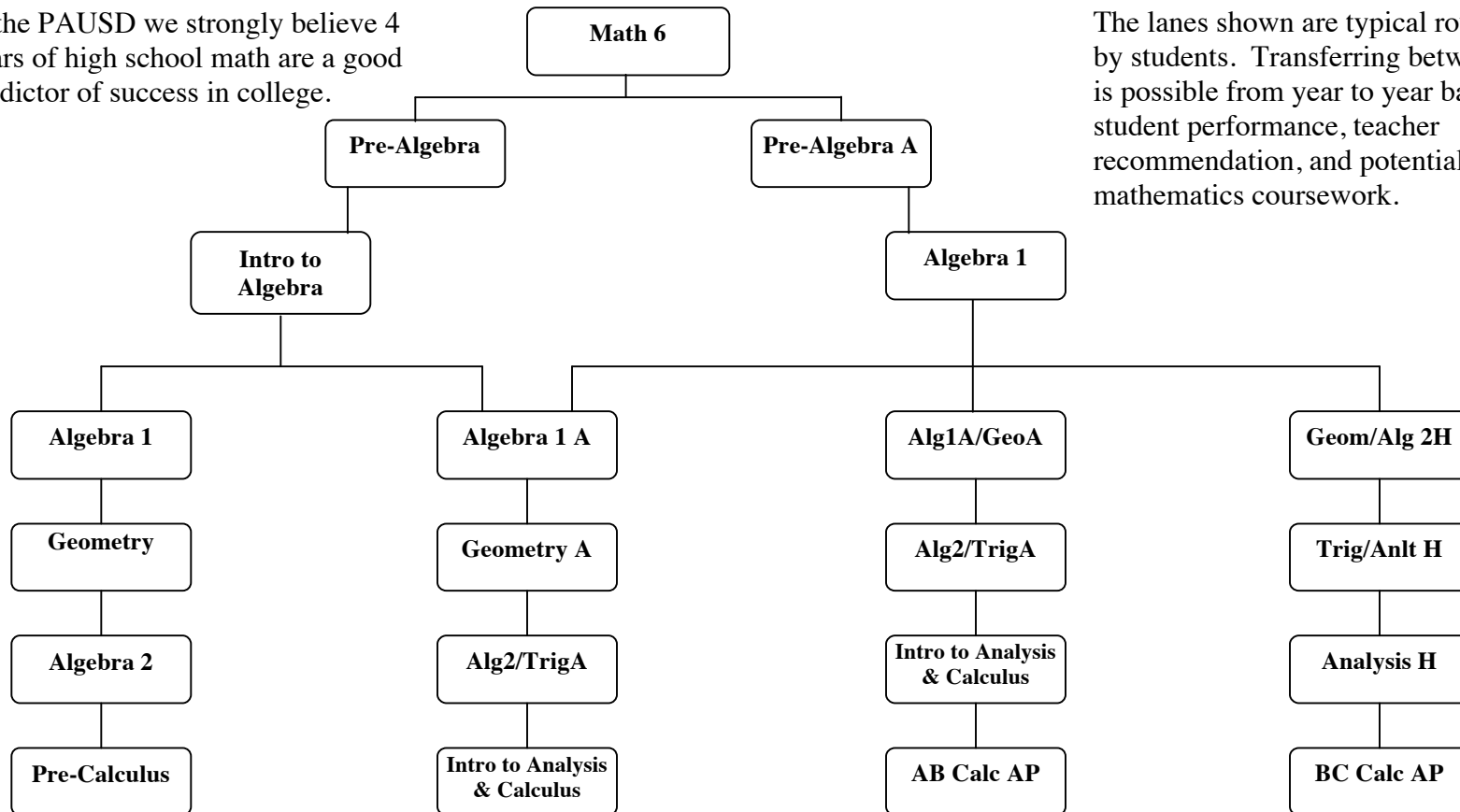


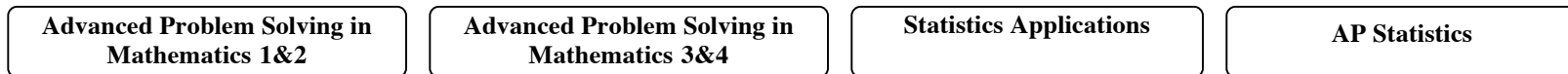
THE PAUSD SECONDARY MATH FLOW CHART

In the PAUSD we strongly believe 4 years of high school math are a good predictor of success in college.

The lanes shown are typical routes taken by students. Transferring between lanes is possible from year to year based on student performance, teacher recommendation, and potential summer mathematics coursework.



Math Electives: Please check the catalog for pre-requisites for each course



The following **Computer Science** elective courses can be taken for either Mathematics or Vocational Ed Credit

